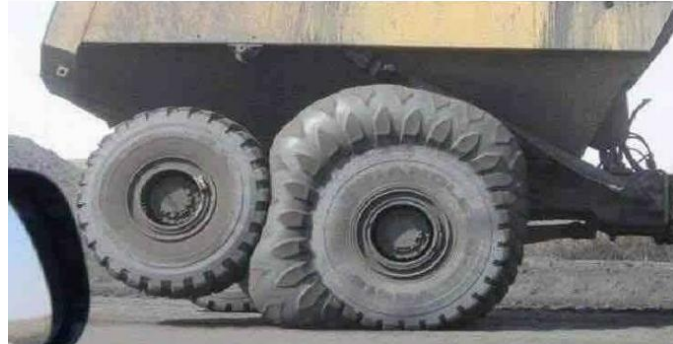


Cheap is always to expensive...

TYRES FOR DUMPER TRUCKS ARE EXPENSIVE. IT IS SOMETIME TEMPTING FOR ENDUSERS TO TEST CHEAP EXOTIC MANUFACTURERS.

THIS PICTURE SHOWS WHAT CAN HAPPEN....



YOU CAN EASILY GUESS THE COST OF THE DAMAGES ON THE DUMPER TRUCK AXLES, ON TOP OF THE COST OF TAKING IT OUT OF OPERATIONS FOR REPAIR.

PICTURED TYRE IS NOT A PREMIUM BRAND. PREMIUM OFF-THE-ROAD TYRES ARE CERTAINLY NOT CHEAP. BUT THEY ARE THE MOST RELIABLE AND COST-EFFICIENT SOLUTION.

TYRE-IMPORT GERMANY IS AN IMPORTER - EXPORTER OF **OTR TYRES, MINING TYRES, CONSTRUCTION TYRES AND TRUCK TYRES**. WE HAVE BECOME ONE OF THE MOST TRUSTED SUPPLIERS OF OTR/EARTHMOVER AND TRUCK TYRES WORLDWIDE DUE TO OUR PROFESSIONALISM, HONESTY, CUSTOMER-SERVICE AND PERSONAL RELATIONSHIPS.

TYRE-IMPORT HAS BUILT AN EVER-GROWING SUPPLIER BASE THAT WE WORK WITH DAILY TO SOURCE THE TYRES THAT YOU NEED TO KEEP EQUIPMENT OPERATIONAL. WE HAVE GOOD CONNECTIONS TO BUYING / SELLING SOURCES NOT ONLY IN EUROPE BUT ALSO WORLDWIDE.

WE SPECIALIZE IN SUPPLYING OF ALL PREMIUM BRANDS.

FOR:

ARTICULATED DUMP TRUCK, COMPACTOR, CONTAINER HANDLER, CRANE, RIGID HAUL TRUCK, WHEEL DOZER, WHEEL LOADER, BACKHOE, MOTOR GRADER, MOTOR SCRAPER, MOBILE EXCAVATOR, ROAD RECLAIMER, LOG SKIDDER, TOOL CARRIER, UNDERGROUND MINE,....AND MORE

BRANDS:

ALL PREMIUM BRANDS INCLUDING: MICHELIN, BRIDGESTONE/FIRESTONE, GOODYEAR, YOKOHAMA, TITAN AND BELSHINA.

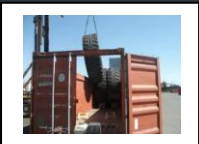
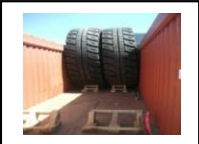
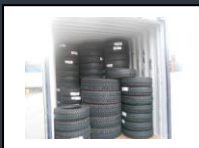
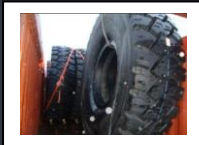
WE SOURCE OTHER WELL-REPUTATED BRANDS ON REQUEST.

RIM SIZES:

20" TO 63" DIAMETER.
16,5" TO 24" DIAMETER.

OUR CUSTOMERS: MINING INDUSTRY, CONSTRUCTION INDUSTRY, HEAVY EQUIPMENT DEALERS, OEMS, WHOLESALERS.

MARKETS: WORLDWIDE.



CONTACT:

TYRE-IMPORT GERMANY GMBH
FRANZ-MOORFELD-STRASSE 24
33378 RHEDA-WIEDENBRUECK
GERMANY

E-MAIL: OFFICE@TYRE-IMPORT.COM

PHONE: +49 5242 - 378 103

FAX: +49 5242 - 378 104

WWW.TYRE-IMPORT.COM

**TYRE-IMPORT
GERMANY**
simplify your tyre business!